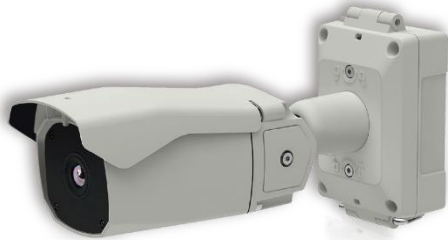


# QUANTUMRED

Vision, beyond the limits.



QuantumRed

Bullet Type Camera

Accuracy

Accurate temperature  
Measurement and  
High quality imaging

Expandability

Supports various video  
Formats for multiple  
applications

Efficiency

Low cost, space free,  
comfortable,  
easy installation

This is a bullet type thermal imaging camera equipped with HanwhaSystems QuantumRed module.

It satisfies the IP67 standard and can be easily installed outdoors to view thermal images.

It can be used in a wide range of fields such as monitoring inside/outside buildings, power plants, outside monitoring of military bases, and transportation systems.

It provides basic video storage using a Micro SD card.

## Key Features

- Camera combined with HanwhaSystems QuantumRed(QR, QRT100, VR)
- Thermal imaging module control through Web-browse
- Support H.264, H.265, MJPEG streaming
- ONVIF/Zero Configuration support
- Micro SD card support
- Operates in -35°C ~ +70°C environment
- PoE powered operation (Only)

## QuantumRed Bullet Type Camera Technical Specifications

### Video

Resolution	640x480, 320x240 for QuantumRed QR/QRT100/VR
Streaming	Simultaneously H.265, H.264 & MJPEG (Multi Streaming)
Bitrate Control	CBR/VBR
Frame Rate	30Hz / 60Hz
1-ref NUC	One Push
Shutter	AUTO, OFF, MANUAL
Pallets	OFF, MODE1, MODE2, MODE3, MODE4
Video Rotation	Flip, Mirror
Sharpness	OFF, MODE1, MODE2, MODE3
Noise Filter	OFF, MODE1, MODE2, MODE3
Brightness	0 ~ 40
Contrast	0 ~ 40
Hot Color	White, Black

### Network

Ethernet	RJ-45(10/100 Base-T)
Protocol	TCP/IP, UDP, IPv4/v6, HTTP, HTTPS, FTP, UPnP, RTP, RTSP, RTCP, DHCP, ARP, Zeroconf
Onvif	ONVIF Profile S, T Compliant
SDK Support	API
Network Time Sync.	Synchronized with Computer or NTP Server, Manual
User/Host	Up to 10 users

### Operational

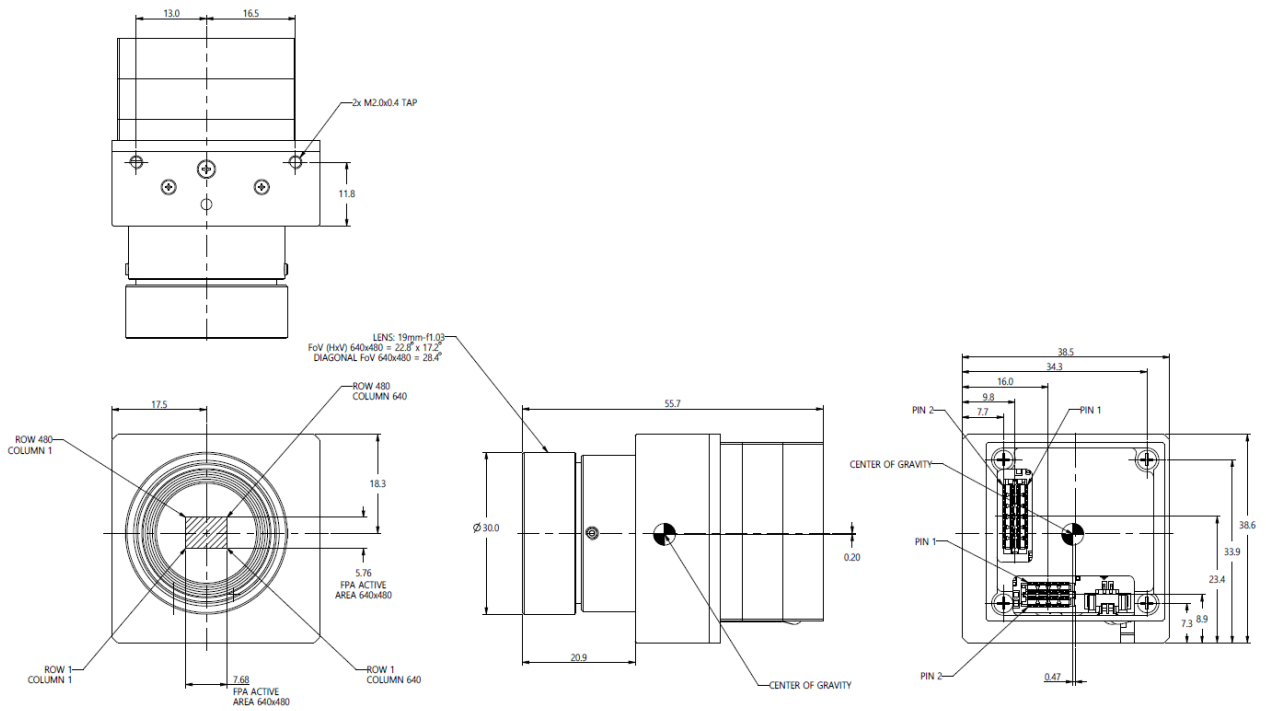
Web Viewer	MS Explorer, MS Edge, Chrome, Firefox, Safari
Privacy Mask	Up to 4 area
Motion Detection	Up to 4 area
OSD	Cam Title, Date/Time, up to 16 characters
Alarm	Option- IN(3.3V) / OUT(Open Collector)
Audio	Not Available
SD slot	Yes
Connector	1x RJ45 socket, 2x 4p LSA 1x 8p screw terminal block

### Environmental & Electrical

Operating Temp.	-35°C ~ 70°C
Storage Temp.	-40°C ~ +85°C
Power	PoE(IEEE 802.3af, Class3)
Housing Material	Body & Junction box : Aluminum Sun shield : Poly carbonate with paint finish
Cable Inlet/Outlet	2x Silicon Grommet
Ingress Protection	Housing body : IP67, Junction box : IP66
NDAA	Compatible
Dimension(IP Section only)	82.15mm(W) x 130.5mm(H) x 265.8mm(L)
Weight	QVGA : Approx. 1273g / VGA : Approx. 1287.5g

# QuantumRed Bullet Type Camera Dimensions

## QuantumRed VR(19mm lens) Base Module Dimension (unit : mm)



## Bullet Type Camera Dimension (unit : mm)

